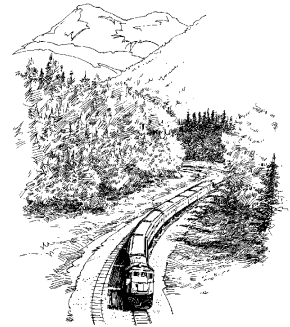




## Chinook Trail Annual Meeting Nov. 12, 2006 at Noon Water Resources Education Center



The Chinook Trail Annual Meeting is scheduled this year for November 12th at 12 noon at the Water Resources Education Center. The theme is *“The Little Train That Could”—Building the Rail/Trail Segment of the Chinook Trail and Beyond.*

This year we will feature two locals—**Florence Wager** and **Kelly Puntaney**—both well known for their dedication to expanding trails in Clark County.

Florence, a long-time Vancouver/Clark County Parks commissioner, currently is serving as co-chair of the commission. She left the area in 1954 to work in California. Returning in 1990, she soon was recruited to join CTA as a board member and officer. She made many valuable contributions due to her many years’ experience working with non-profits in the Bay area.

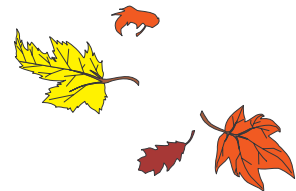
Kelly Puntaney has been with the Vancouver/Clark County Parks Department where he currently serves as Trails, Parks and Greenways planner. He is recognized throughout the county and the state as a visionary whose boundless energy and enthusiasm for trails has produced great success.

The two speakers will provide details of the Chelatchie Prairie Rail/Trail segment for which \$600,000 has already been appropriated. They will also outline plans to extend the trail beyond the county and on to Yakima.

### National Trails Day June 2006 on Silver Star



Roger Anderson relaxes with a little snowman friend after working hard on Silver Star. National Trails Day June 3rd, 2006. See inside for more photos.



### CTA Website Wins Award

American Trails has presented an award to the Chinook Trail Association for outstanding website design in the category of Presentation of Plans. The letter of congratulations states, *“We believe that trail-related websites are an invaluable resource to the trails community, and we thank you for the time and effort you spent on yours. It has made your site stand out above the rest.”*

CTA thanks Clark College for their help in our site design.

# President's Message

By Larry Swatosh



Larry Swatosh  
CTA President

Work parties this summer have been somewhat less active than in the past. We have had two trips to the "Cherry Orchard Project" in Lyle, Washington. The first trip was mostly an observation trip and involved some trail clean up on the existing trail. This is a project that will need more rerouting work but Chinook Trail Association is in the process of trying to find grant funds for future work. We hope to find enough funds to hire a trail contractor to do some necessary machine

work and hire some work crews out of the Mt. Adams area to do the finish work. It is obviously difficult to stage work parties outside of Clark County to more distant sites—we are spending five hours just in travel time.

Don Cannard has directed more work crew parties in the Beacon Rock area and some minor clean up parties locally on the Ellen Davis Trail.

National Trails Day was somewhat experimental this year in that it was a cooperative venture between the Chinook Trail Association and the Washington Trail Association teaming up with the State's Department of Natural Resources and the United States Forest Service. More than sixty folks showed up for the event that was staged at the Silver Star area. The work involved trail grooming, tree planting and some "deconstruction" work on roadways to try to prevent unauthorized ATV use. The event ended with an excellent barbecue and some short interpretive walks. All in all, it was a great opportunity for the Chinook Trail Association to showcase a portion of "our" Chinook Trail to some folks who had never seen it before.

## Backpack Route Pioneered by CTA Member

By Roger Anderson

During the week of August 27 to September 2, a weeklong backpack adventure was made between the Trails Club of Oregon's Tyee Lodge at Government Camp and Nesika Lodge in the Multnomah Basin. CTA member Roger Anderson led the 68-mile trek, gaining three other TCO members along the way.

Karen Yanhs initiated the idea and did much of the research on locating old maps of the route. She also plotted the route on the computer and entered GPS waypoints. Roger and Karen spent the next several weekends dayhiking portions of the overgrown trail system checking on campsites and availability of drinking water.

The two backpackers left Tyee on August 27 and arrived at Ramona Falls that evening where they met Linda Conrad. She had just completed running the Hood to Coast Relay earlier in the day and backpacked in four miles to join the group.

The second and third days of the trip were cold, rainy and foggy with a constant strong wind. The cold backpackers arrived at Wahtum Lake where, by prior arrangement, TCO member Merrill Newman had delivered a pizza and the other three days' worth of trail food. A roaring campfire greeted the

backpackers and they heated the pizza over the campfire. TCO member Ken Becker joined the group as they continued toward Nesika.

They all arrived at the lodge on Friday, September 1st, a day earlier than

planned. During the weekend, the tired backpackers enjoyed the Nesika Lodge celebration. (See the Nesika celebration article on page 6 of this newsletter.)

### Thank You All . . .

Chinook Trail Association wishes to express our special appreciation to the following friends for their gifts this past year.

\$1,000 + William & Catharine Byrd  
Joanne Kendall

MarCine Miles  
Michael Skaife

\$500 + None

\$25 + Nancy Baker  
Cheryl Cannard  
Don & Sue Cannard  
Denis Cusack  
Evan Hall  
Connie Ivie  
T.D. Leavitt

\$100 + Gary O'Connell  
Walker Paynter  
Robert & Geri Rowe  
Nancy Russell

\$50 + Dory Brooking  
Wilson & Susan Cady  
Paul & Susan Cannard  
John Coyle  
Jerry & Andrea deRuyter  
Phil Durkee  
Richard Grams  
Philip & Rose Marie  
Hamilton  
Randall Kester

Edward McAnnich  
Grace West Monaghan  
Lee & Janet Squier  
Gareth Wilson  
Steven Wilson

We would also like to extend our appreciation to our 2006 "Life Member" Ed Lynch.

# CTA to Launch Stewardship Program

By Roger Anderson

A trail stewardship program is being crafted by the Chinook Trail Association's Board of Directors. The program is in response to the adopt-a-trail agreements CTA has signed with the Department of Natural Resources.

The agreements require CTA to complete a walk-through inspection of the trail conditions twice a year, then conduct workparties according to the maintenance needs. All sections of the Chinook Trail system on DNR land are affected.

The program, when in place, will have individuals and organizations be responsible for maintaining a given section of the trail. They will be given "hands on" training of conditions to look for, such as blocked culverts and waterbars, downed logs, and brushy, overgrown areas.

The trail maintenance has been made much more difficult by frequent illegal motorized use of quads and motorcycles. They access the non-motorized use trail by the abundance of logging roads being created as clearcutting continues to increase in the Yaacolt Burn state forest. DNR lacks the funds to support law enforcement of the illegal use, so it's up to CTA to maintain the trails.

You are encouraged to step forward and become a part of the stewardship

*Continued on Page 5*



Megan Raymond with other NTD 2006 workers on Silver Star.



NTD workers take a break from work and enjoy the view from Silver Star.

## *Mission Statement of the Chinook Trail Association (CTA):*

- Advocates development of a Columbia River bi-state loop trail;
- Provides information and education to develop public support.
- Monitors and participates in route selection, design standards, trail development and maintenance in an ongoing spirit of conservation to preserve the natural beauty of the Gorge;
- Cooperates with appropriate local, state and federal agencies to develop this recreational resource;



---

# Chelatchie Rail-Trail Partnership Project to Include Vancouver-Yakima Concept Trail Study

By Kelly Puntenev

As this issue goes to press, I have received word from the National Park Service (NPS) that we have been selected to receive a Rivers, Trails and Conservation Assistance Grant, providing that the NPS agency budget is approved this month. If this assistance is realized, our ability to bring our proposal for developing a shared-use Vancouver-Yakima Concept Trail Plan will be greatly enhanced. NPS planners would help draw the needed attention from required stakeholders including the U.S. Forest Service, the Washington Department of Natural Resources and Mount St. Helens National Volcanic Monument.

What we foresee to be the deliverable in this process is a document that would spell out, step by step, the actions and funding needed to bring the idea of a trail to Yakima from concept to a “ground truth” proposal. Only then can we expect the vision to be acted upon as was the case with both the John Wayne and Centennial State trails.

**PROJECT DESCRIPTION:** The Chelatchie Rail-Trail Project is a Clark County Public Works, Transportation and consolidated City-County Parks Partnership Program to develop a concept trail alignment for Southwest Washington, as well as plans and agreements to build a shared-use trail that will enhance and encourage increased opportunities for safer walking and bicycling within the Chelatchie Railroad Corridor. The program will create an enhanced pedestrian and bicycling environment for year-round urban, suburban and rural travel. The project emphasizes four program components:

- **Infrastructure improvements:** The project will include a recommended alignment, phasing plan, cost estimates and finance plan, trail right-of-way agreements, operation and maintenance agreements, Phase I permitting, engineering construction documents and the construction of a first section of trail. The length will be determined by the outcome of the study.

- **Safety and education:** Mileage locator markers will be included to help guide emergency responders to any particular trail location. Health, safety and interpretive signage programs will complement a series of community walking and biking events designed with the help of the Vancouver-Clark Parks & Recreation Department, **Chinook Trail Association**, Discovery Walks and Vancouver Bike Club. Activities will focus on health and safety concerns.

- **Historic preservation and rehabilitation of railroad structures:** The rich history of the century-old railroad will be preserved in historical and environmental educational interpretive signage that assumes the proposed use of existing railroad structures as trail-user interpretive amenities.

- **Preservation of railway corridor for shared-use trail:** Develop a 33-mile shared-use regional trail alignment concept as part of a greater proposed state trail and build the first-phase of trail, meeting all county, state and federal requirements while maintaining a functional railroad. The first section of trail will stand alone if future phases are delayed.

**PURPOSE AND NEED:** Following a year-long planning process to update the county’s regional trail plan we heard from the community clearly that this rail-trail project should be a top priority as we attempt to connect our county with alternative transportation systems. The route between the Ellen Davis Trail and Moulton Falls is a critical link of the **Chinook Trail Vision**. Our proposal to make the historic rail corridor a viable trail asset includes making it a safe, functioning, freight rail line. Walking and bicycling are critical modes of travel for many Clark, Cowlitz, Skamania, Lewis and Yakima County residents and visitors—our youth, elderly, households with no access to vehicles, and the physically impaired, to cite just a few examples.

This project will explore the idea of connecting with historic trails around the south and east sides of Mt. St. Helens in central Washington and the Chelatchie rail corridor in Clark County to create a major link in a regional shared-use trail system running through the heart of the county and intersecting with numerous regional and community trails. These program elements will meet transportation requirements safely and efficiently and potentially improve the lives of a demonstrable and measurable portion of Southwest Washington’s population. Once the concept alignment is verified and approved, it will encourage further development of both the rail and the trail, as well as providing tangible support for “smart growth” and pride in the area’s cultural heritage. In addition, the project will help facilitate a solution to our growing concern in the region with the “inactivity” crisis that is at the root of so many health-related issues and—combined with the steep rise in gas prices—is causing many residents to bike or walk, either out of preference or need.

**RELATIONSHIP TO TRANSPORTATION:** All four primary project components relate directly to surface transportation. Infrastructure improvements will enhance connectivity, safety and ease of use for walkers, bicyclists and other ADA mechanical devices along the conceptual 150-mile corridor and more specifically the Phase I trail. The education component will teach residents about the safe use and protocol of shared-use trails for basic mobility needs and will provide them with the opportunity to walk or bicycle as a means of transportation. Programs will focus on the health and environmental benefits of using trails. The education component will also develop a community resource in the form of functional interpretive signs for cultural and environmental learning; trail system maps and guides; and events for non-profits and communities to sponsor and produce. The latter will contribute to the local economy and build community pride. Developing these programs simultaneously with planned infrastructure improvements is unusual but will stimulate usage immediately following completion of a first phase of development. It is understood that every phase of trail

*Continued on Page 5*

**Chinook Trail Association Profit & Loss**  
July 1, 2005 through June 21, 2006

**INCOME**

4000 - INCOME	
4004 - Hadley Trail . . . . .	470.22
4010 - Membership Dues . . . . .	2,838.00
4030 - Annual Meeting Income . . . . .	950.00
4069 - Ellen Davis Memorial . . . . .	.47
4075 - Interest Income . . . . .	3.87
4091 - Donations . . . . .	2,643.00
TOTAL 4000 - INCOME . . . . .	<u>6,905.56</u>

**Total Income** . . . . . **6,905.56**

**EXPENSES**

5000 - GENERAL OPERATING EXPENSES	
5101 - Dues/Filing Fees OR/WA . . . . .	158.75
5105 - Postage . . . . .	556.73
5106 - Printing/Copies . . . . .	266.39
5108 - Office Supplies & Equipment . . . . .	152.55
5109 - Telephone . . . . .	476.05
5110 - Miscellaneous . . . . .	75.65
5115 - Photography (Media) . . . . .	23.48
5119 - Rent . . . . .	372.00
TOTAL 5000 - GENERAL OPERATING EXPENSES . . . . .	<u>2,081.60</u>

5104 - Insurance . . . . .	1,280.00
5111 - Licenses . . . . .	33.75

6000 - PROMOTIONS	
6201 - Member Recruitment . . . . .	114.59
6202 - Annual Meeting . . . . .	1,187.61
6204 - Newsletter . . . . .	532.01
6208 - National Trails Day Expenses . . . . .	341.29
6209 - Website Maintenance . . . . .	285.00
6210 - Awards . . . . .	54.93
TOTAL 6000 - PROMOTIONS . . . . .	<u>2,515.43</u>

7000 - CONSTRUCTION	
7311 - Tools & Equipment Purchases . . . . .	244.30
TOTAL 7000 - CONSTRUCTION . . . . .	<u>244.30</u>

**Total Expenses** . . . . . **6,155.08**

**NET INCOME** . . . . . **750.48**

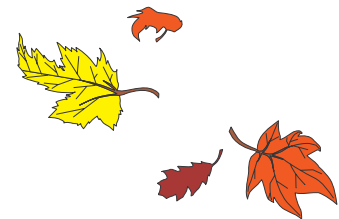
## Opportunities for Volunteers

Here are some areas where help could be used: Trails and hike coordinator, tool steward, working in the office, helping with mailings, newsletter, membership, and writing grants. As you can see, we have a job for every talent.

### CTA to Launch Stewardship Program

*Continued from Page 3*

program and let other individuals and organizations know about the program. For more information contact Roger Anderson at 360-254-2371.



### Chelatchie Rail–Trail Partnership

*Continued from Page 4*

development will be able to stand alone and function fully.

**FINANCIAL RESPONSIBILITY:** Local matching funds for this project were made available within the 2006 Parks Budget with the anticipation that the Enhancement Program would be reinstated as rumored. These funds are derived from the Regional REET Program and County Road Funds. In-kind services from parks and transportation staff will provide \$20,000 in project coordination, design and engineering over a two-year period (06-07). An additional grant was written to the National Park Service to assist us in the required work to bring this effort to a level that can attract additional funding. **The non-profit Chinook Trail Association**, with the help of other trail and bicycle organizations, will cover \$10,000 of costs associated with the onsite inventory and assisting in developing

the educational program components. This assistance will be in the form of in-kind volunteer time to ensure the program is successful. **Chinook Trail Association** assisted in the Clark County Trail & Bikeway Systems Plan approved by the Clark County commissioners in April of 2006.

As components of the Vancouver-Clark Trails program, the goals and programs outlined herein have had widespread previous exposure and success. The infrastructure improvements are identified in the adopted Comprehensive Park and Open Space Plan. Vision statements, goals, and policies which support the expansion of alternative transportation modes are within the project scope. The educational components have been field-tested in other jurisdictions and have built a base of local support as the letters of support demonstrate. The first phase of the project is ready to be implemented beginning in late 2006 and running through 2007.

# Nesika Lodge Celebrated

By Roger Anderson

On the weekend of September 2-3, the Trails Club of Oregon celebrated the completion of its beautiful Nesika Lodge located in the Multnomah Basin. It was attended by about 175 people including a few members of the Chinook Trail Association. The large stone and log constructed lodge project began about 1989 with an idea to replace the old, crumbling lodge.

George Milne was one of the original project coordinators until illness forced him to step aside a few years later. Randy Dietrich became a tireless project coordinator and his foresight and insights propelled the construction forward.

The Trails Club volunteers began to tear down the old lodge while talks and plans with the Forest Service continued until permits were handed out. Then, over ten years of almost year round volunteer labor commenced. The sometimes cold, rainy, muddy weather slowed progress considerably. Finally, the floor slab was poured and the walls began to take shape.

Soon it was time to bring in the logs by truck. The incredibly narrow, winding road presented its own challenges as they tried to maneuver the long logs around curves. Logs were raised into place with jacks, fitted, and bolted together. The roof was completed soon after.

Then the internal work began; plumbing and the fixtures were moved into place. The hardwood floor was laid and the huge, heavy cast iron woodstove was moved into the kitchen. The second bathroom was completed with only a few days to spare before the celebration.

The festivities included a lunch hosted by the Trails Club, speeches, and awards to the volunteers. The attendees were treated to a slide show by Randy Dietrich profiling the long project. To view photos of the celebration, visit the Trails Club website at [www.trailsclub.org](http://www.trailsclub.org).



## CTA Board Members

Don Cannard, Co-Founder . . . . .	360-694-4033	
Larry Swatosh, President . . . . .	360-694-1313	
CTA Business Office . . . . .	360-883-6211	
Roger Anderson, Vice President . .	360-254-2371	
Secretary . . . . .	POSITION OPEN	
Dave Sanks, Treasurer . . . . .	360-834-6103	
Bob Scullin, Tool Steward . . . . .	360-834-7892	
Paul Clare, Newsletter Editor . . .	360-892-8173	
Membership Chair . . . . .	POSITION OPEN	
Vern Swaim	Bill Byrd	Bob Scullin
MarCine Miles	Megan Raymond	

## Advisory Board

Bobbi Bindreiff	Mitch Bower	Russ Jolley
Paul Cannard	Kelly Puntenev	Steve Tubbs
Florence Wager		

## Inside This Issue

Cover . . .

- \* Annual Meeting
- \* Website Award

Page 2 . . .

- \* President's Message
- \* Backpack Route
- \* Thank You

Page 3 . . .

- \* CTA Stewardship Program

Page 4 . . .

- \* Chelatchie Prairie Partnership Project

Page 5 . . .

- \* CTA Profit & Loss
- \* Volunteer Opportunities

Back Page . . .

- \* Nesika Lodge Celebrated



## CTA 2006 Work Parties

**Nov. 18  
Saturday**

**Ellen Davis Trail** - Meet at the trail monument at 9:00 a.m. for general landscape work and replacement of stolen plants. Bring your own water, landscape tools, and gloves. Work should be done by noon.

E-Mail: [cta@pacifier.com](mailto:cta@pacifier.com) Website: [www.chinooktrail.org](http://www.chinooktrail.org)  
Business Office Phone: 360-883-6211



This Newsletter is printed on recycled paper.



Chinook Trail Association  
P.O. Box 997  
Vancouver, WA 98666-0997

ADDRESS SERVICE REQUESTED

NON-PROFIT ORG.  
U.S. POSTAGE  
**PAID**  
Vancouver, WA  
Permit No. 518



Mark Your Calendars